

Thomas

2546 Sq.Ft

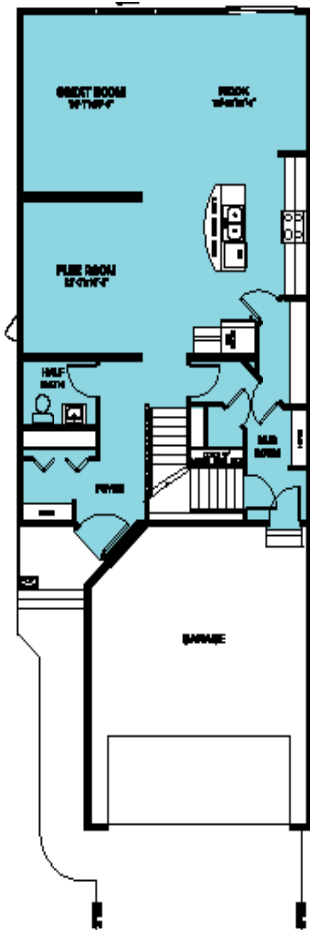
Standard Floor Plan

Home Style	Sterling Advantage
Bedrooms	3
Bathrooms	2.5
Main Floor	1077 Sq.Ft
Upper Floor	1470 Sq.Ft

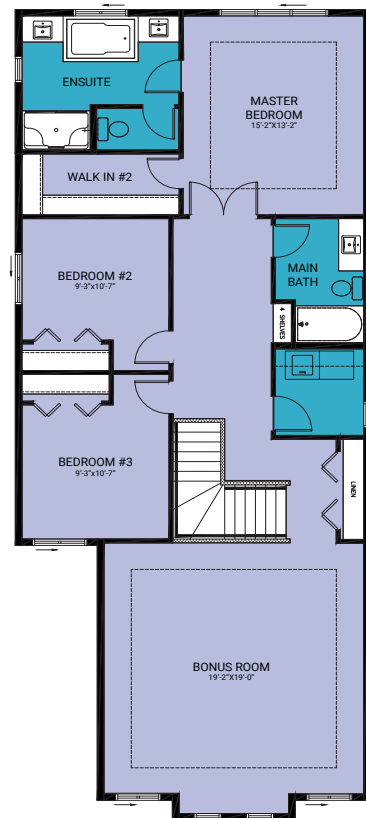


Front Elevation B

Main Floor



Upper Floor



Carpet
 Laminate
 Vinyl Plank

Elevation Options



Front Elevation A

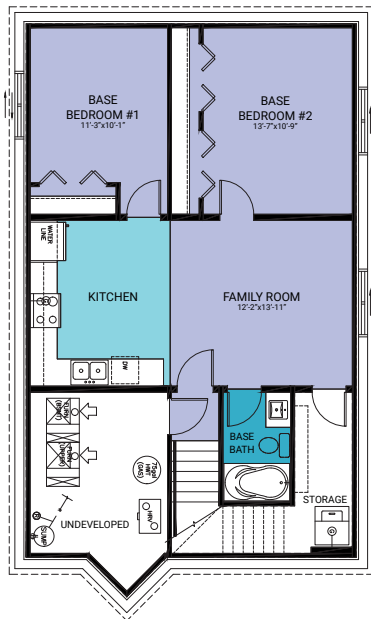
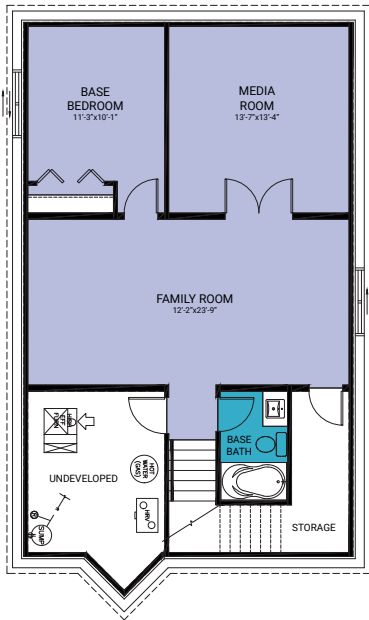


Front Elevation C



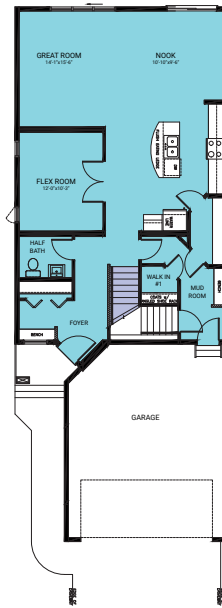
Front Elevation F

Basement Options

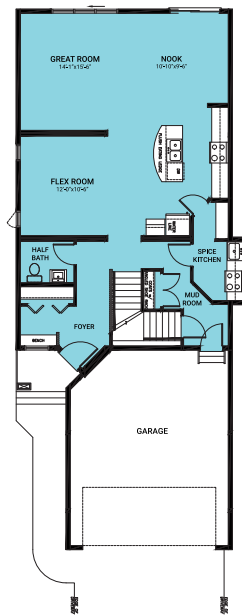


Income Suite Option

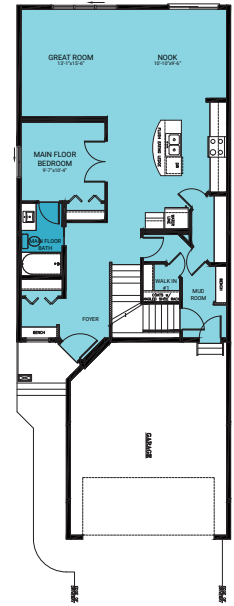
Main Floor Options



Enclosed Flex Room



Spice Kitchen



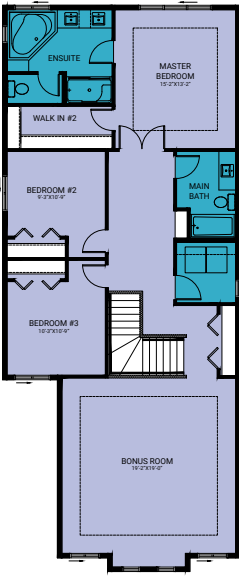
Main Floor Bedroom



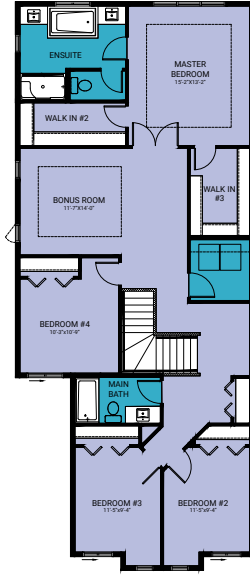
Open to Below w Main Fl. Bed

- Carpet
- Laminate
- Vinyl Plank

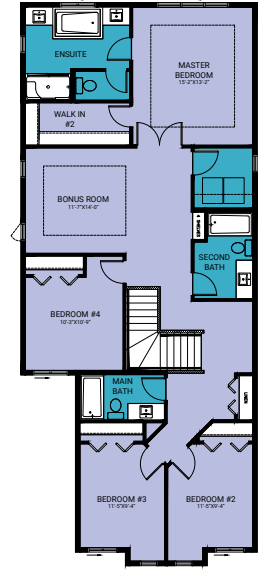
Upper Floor Options



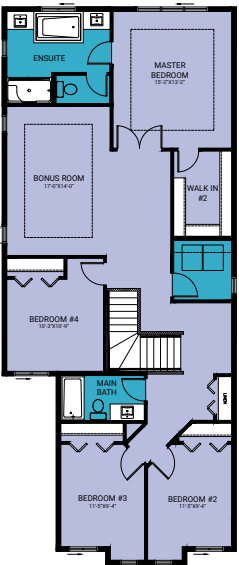
Ensuite Layout



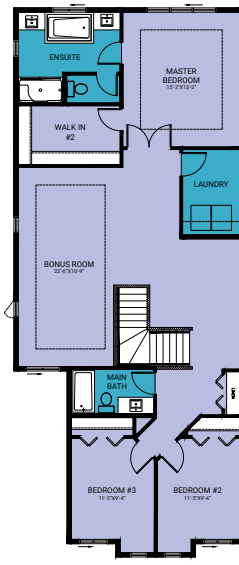
4th Bedroom



4th Bedroom + Extra Bath



4th Bedroom + Extended Bonus Room



Optional Upper Floor

● Carpet ● Laminate ● Vinyl Plank