

# Sapphire

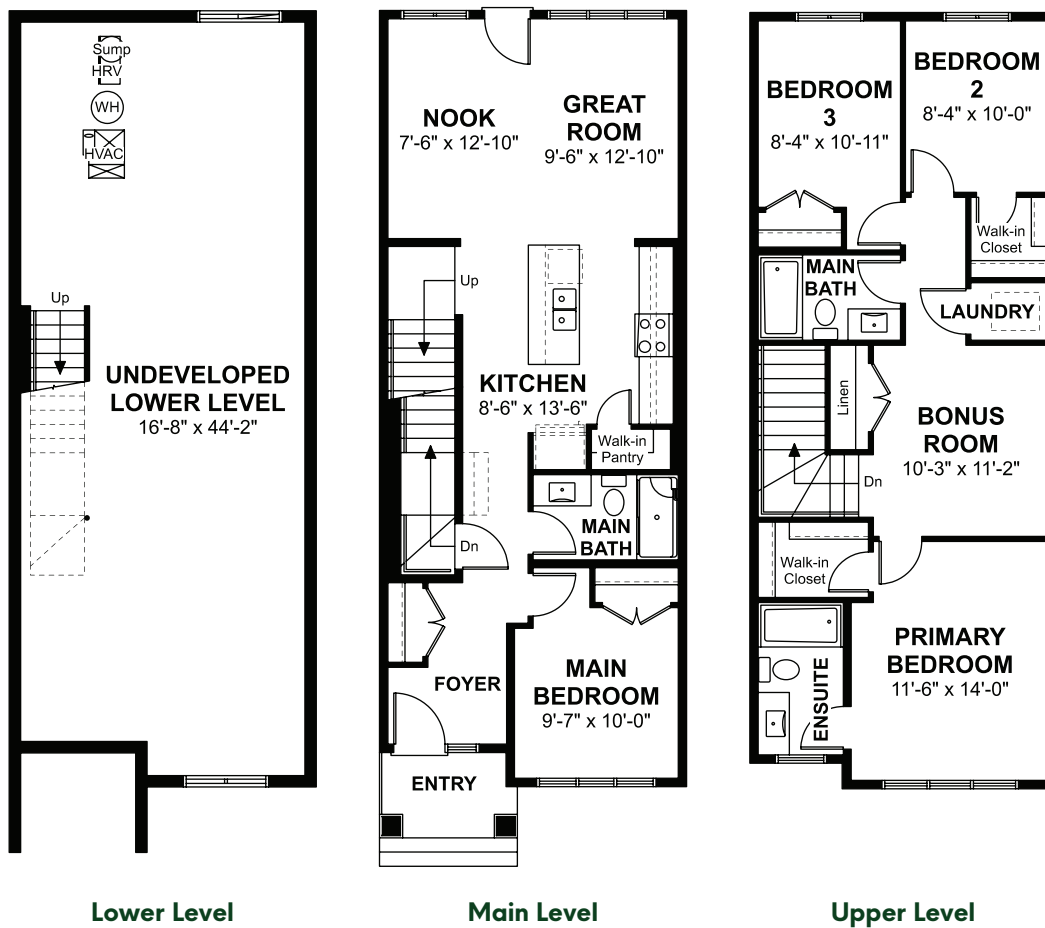
1,619 Sq. Ft. | 4 Bed | 3 Bath



## Highlights:

Quartz Countertops | 9' Main Floors | Full Tile Backsplash | Undermount Sink | Over the Range Microwave | Luxury Vinyl Plank on Main Floor | Main floor Bedroom and Full Bath | Upper Floor Laundry | Bonus Room

## Floor Plan:



**Sterling**  
HOMES

A QUALICO Company

We deliver *Sterling* homes | [SterlingEdmonton.com](http://SterlingEdmonton.com)

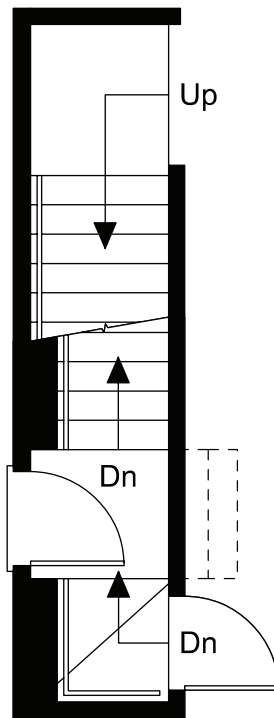
# Sapphire

1,619 Sq. Ft. | 4 Bed | 3 Bath

Elevations, renderings and dimensions shown above are a guideline only and are intended to convey the concept and vision for the home. Architectural requirements or restrictions may differ per subdivision or as work progresses. All images and dimensions are not intended to form part any contract or warranty.

© Copyright 07 |2024

## Main Level Options



**Optional Side Entrance**

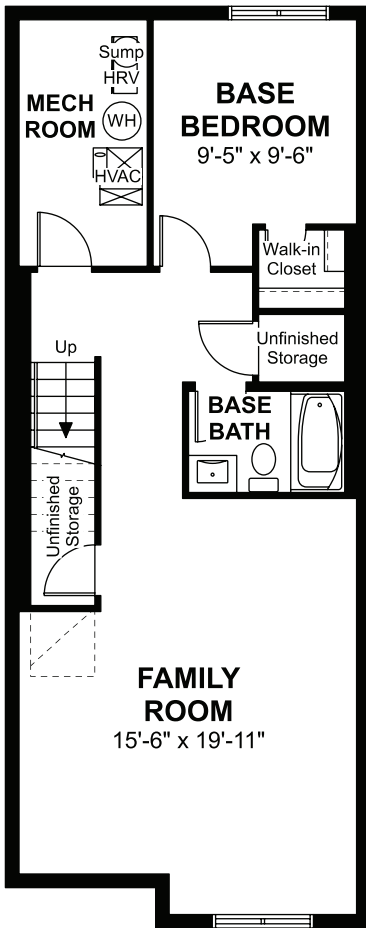
# Sapphire

1,619 Sq. Ft. | 4 Bed | 3 Bath

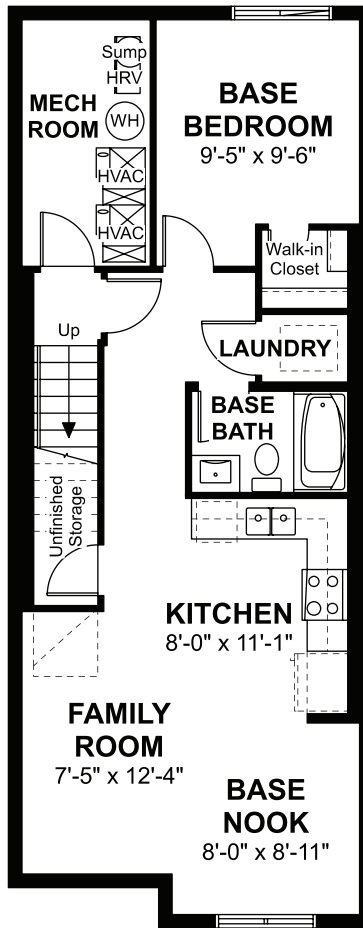
Elevations, renderings and dimensions shown above are a guideline only and are intended to convey the concept and vision for the home. Architectural requirements or restrictions may differ per subdivision or as work progresses. All images and dimensions are not intended to form part any contract or warranty.

© Copyright 07 | 2024

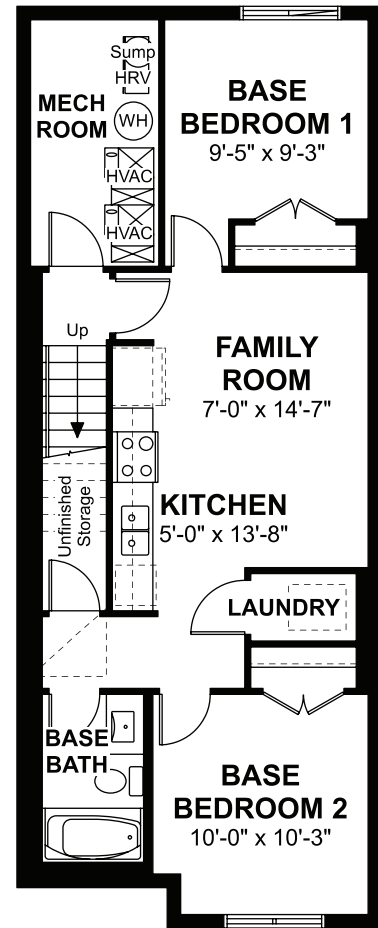
## Lower Level Options



**Optional Finished Lower Level**



**Optional Lower Level Legal Suite 1**



**Optional Lower Level Legal Suite 2**