

Affinity

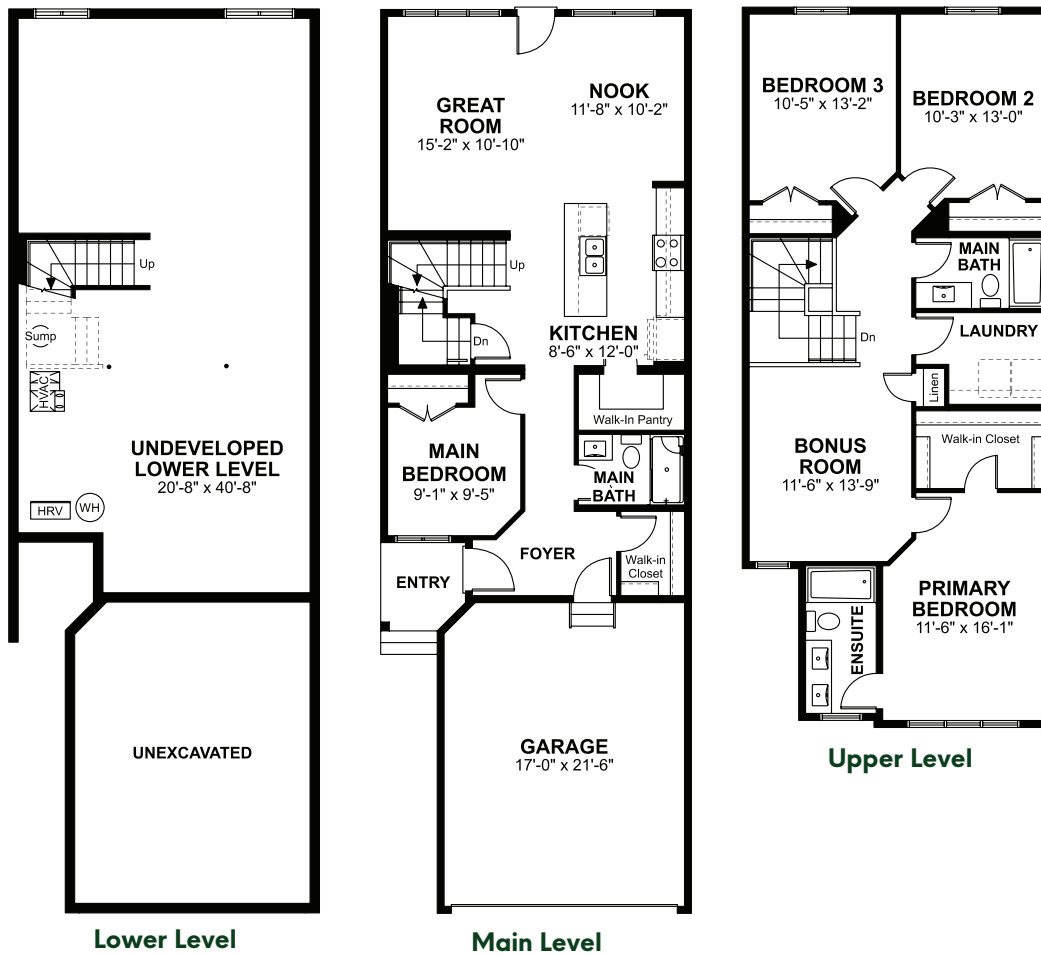
1,970 Sq. Ft. | 4-6 Bedrooms | 3 Bathrooms



Highlights:

Quartz Countertops | 9' Main Floors | Full Height Tile Backsplash
| Undermount Sink & Pull-Out Faucet | Luxury Vinyl Plank on Main
Floor & Wet Areas | Primary Ensuite & Walk-In Closet | Upper Floor
Laundry | Upper Floor Bonus Room

Floorplan:

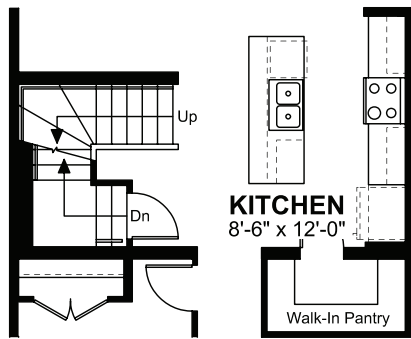


Affinity

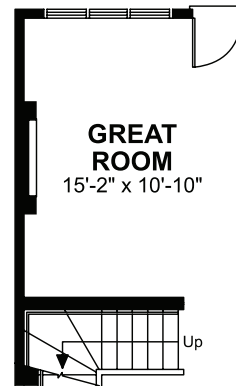
1,970 Sq. Ft. | 4-6 Bedrooms | 3 Bathrooms

Elevations, renderings and dimensions shown above are a guideline only and are intended to convey the concept and vision for the home. Architectural requirements or restrictions may differ per subdivision or as work progresses. All images and dimensions are not intended to form part any contract or warranty.
© Copyright 01|2026

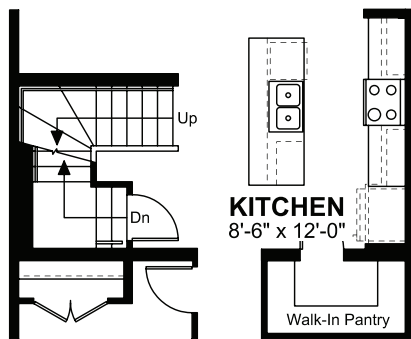
Main Level Options:



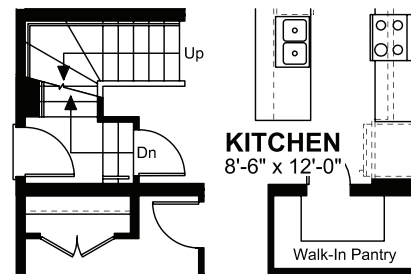
**Optional Kitchen
Luxury Package**



Optional Fireplace



**Optional Kitchen
Premium Package**



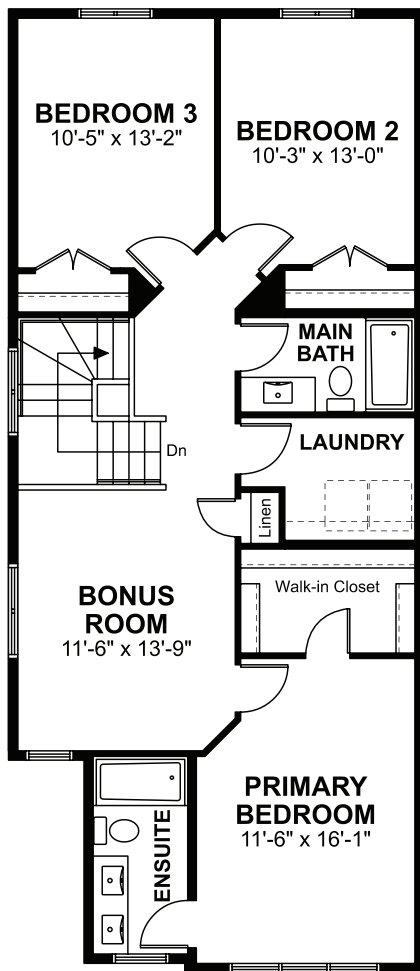
Optional Side Entrance

Affinity

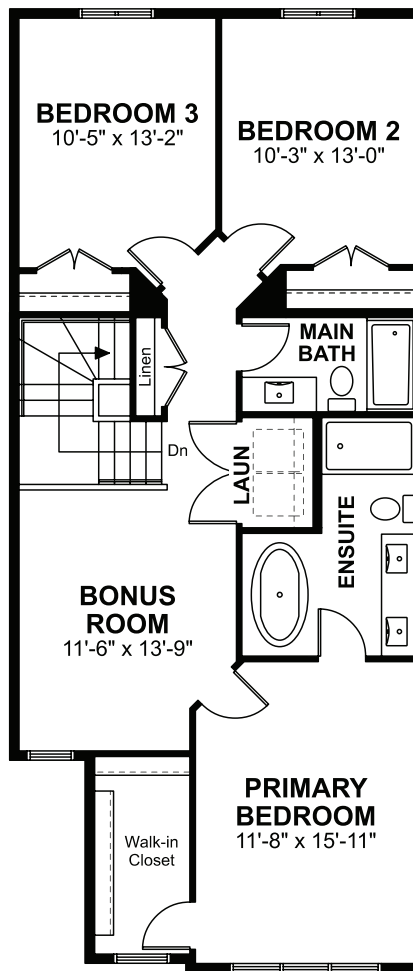
1,970 Sq. Ft. | 4-6 Bedrooms | 3 Bathrooms

Elevations, renderings and dimensions shown above are a guideline only and are intended to convey the concept and vision for the home. Architectural requirements or restrictions may differ per subdivision or as work progresses. All images and dimensions are not intended to form part any contract or warranty.
© Copyright 01/2026

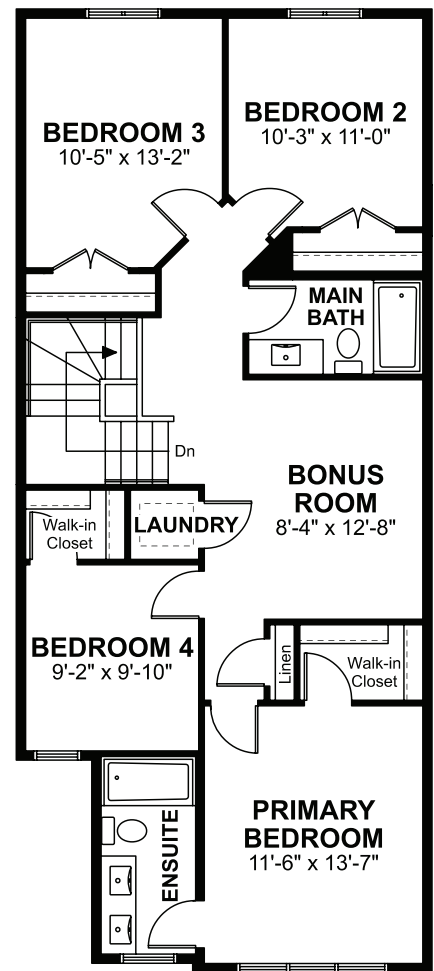
Upper Level Options:



Optional Side Windows



Optional Ensuite



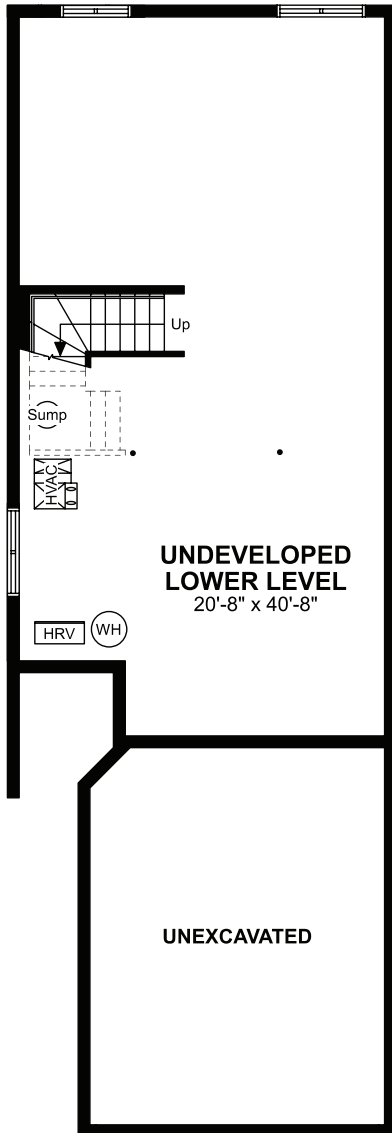
Optional Four Bedroom/Ensuite

Affinity

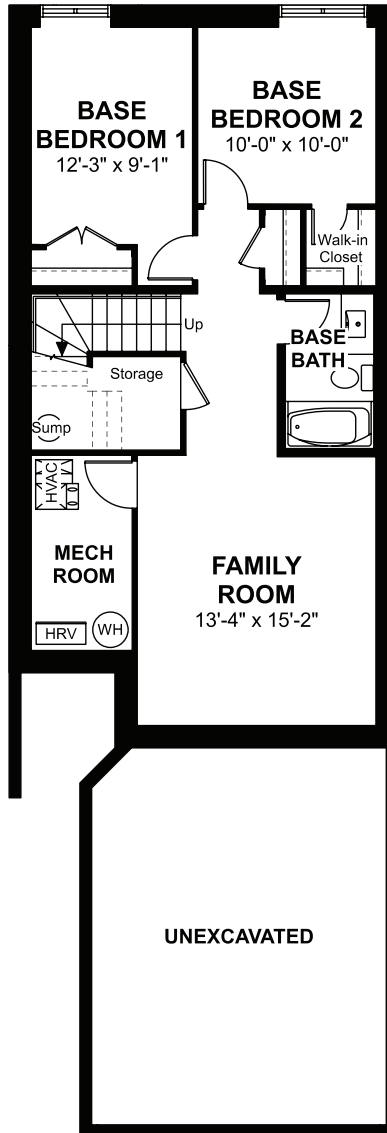
1,970 Sq. Ft. | 4-6 Bedrooms | 3 Bathrooms

Elevations, renderings and dimensions shown above are a guideline only and are intended to convey the concept and vision for the home. Architectural requirements or restrictions may differ per subdivision or as work progresses. All images and dimensions are not intended to form part any contract or warranty.
© Copyright 01|2026

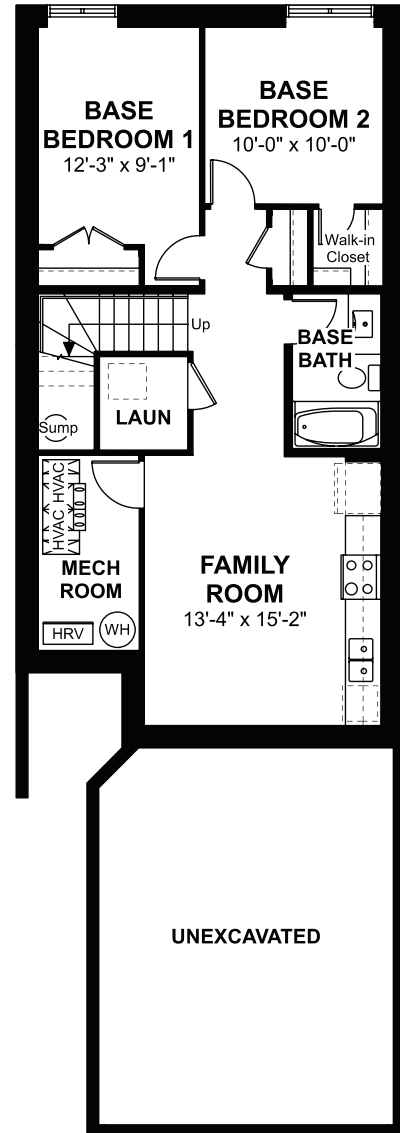
Lower Level Options:



W/ Optional Side Windows



Optional Finished Lower Level



Optional Lower Level Legal Suite