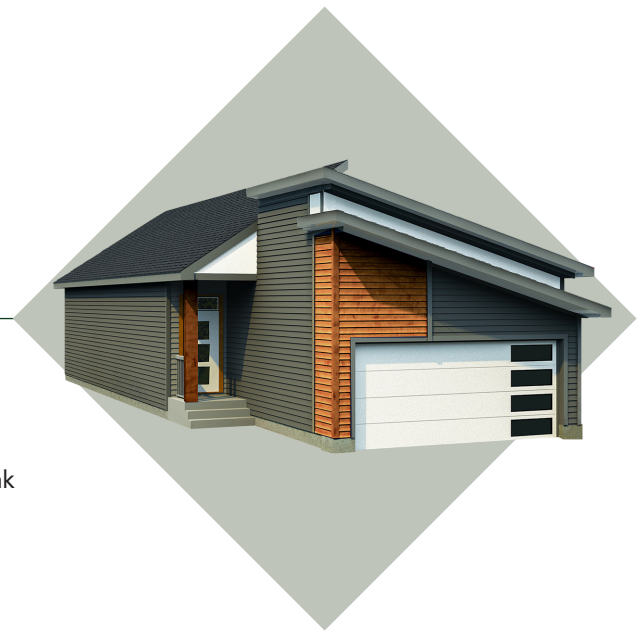


Ashby

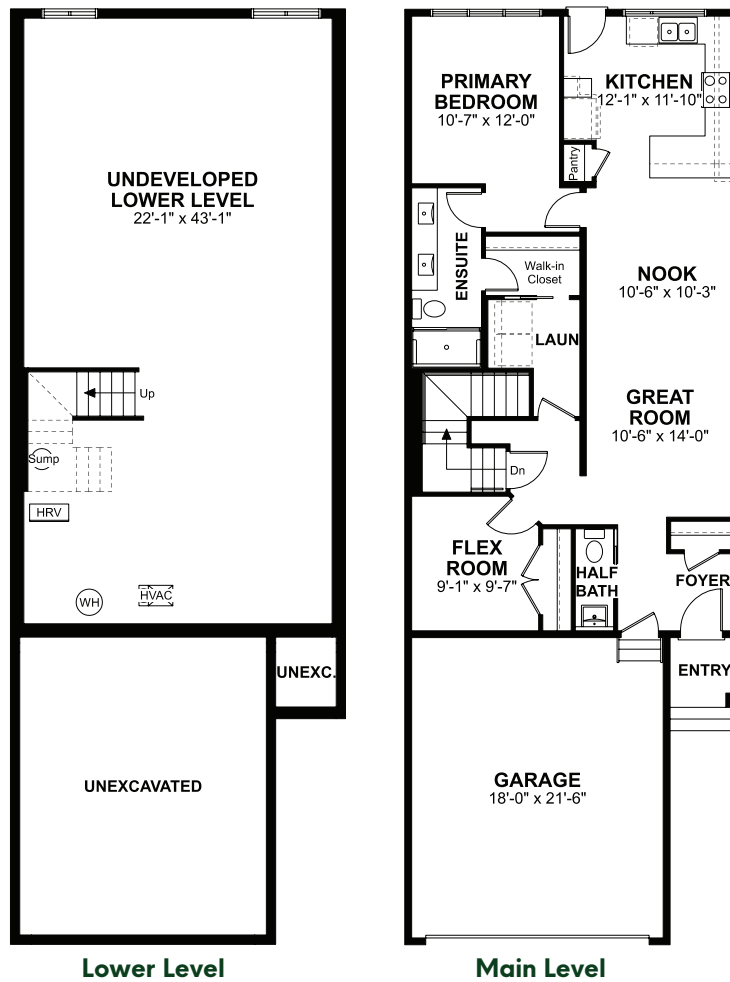
1,080 Sq. Ft. | 1 Bedrooms | 1.5 Bathrooms



Highlights:

Quartz Counter Tops | 9' Main Floors | Full Tile Backsplash | Undermount Sink | Over the Range Microwave | Luxury Vinyl Plank on Main Floor & Wet Areas | Primary Ensuite with Walk-In Closets & Double Sinks – Access to Laundry | Flex Room | Open Concept Great Room & Nook

Floorplan:

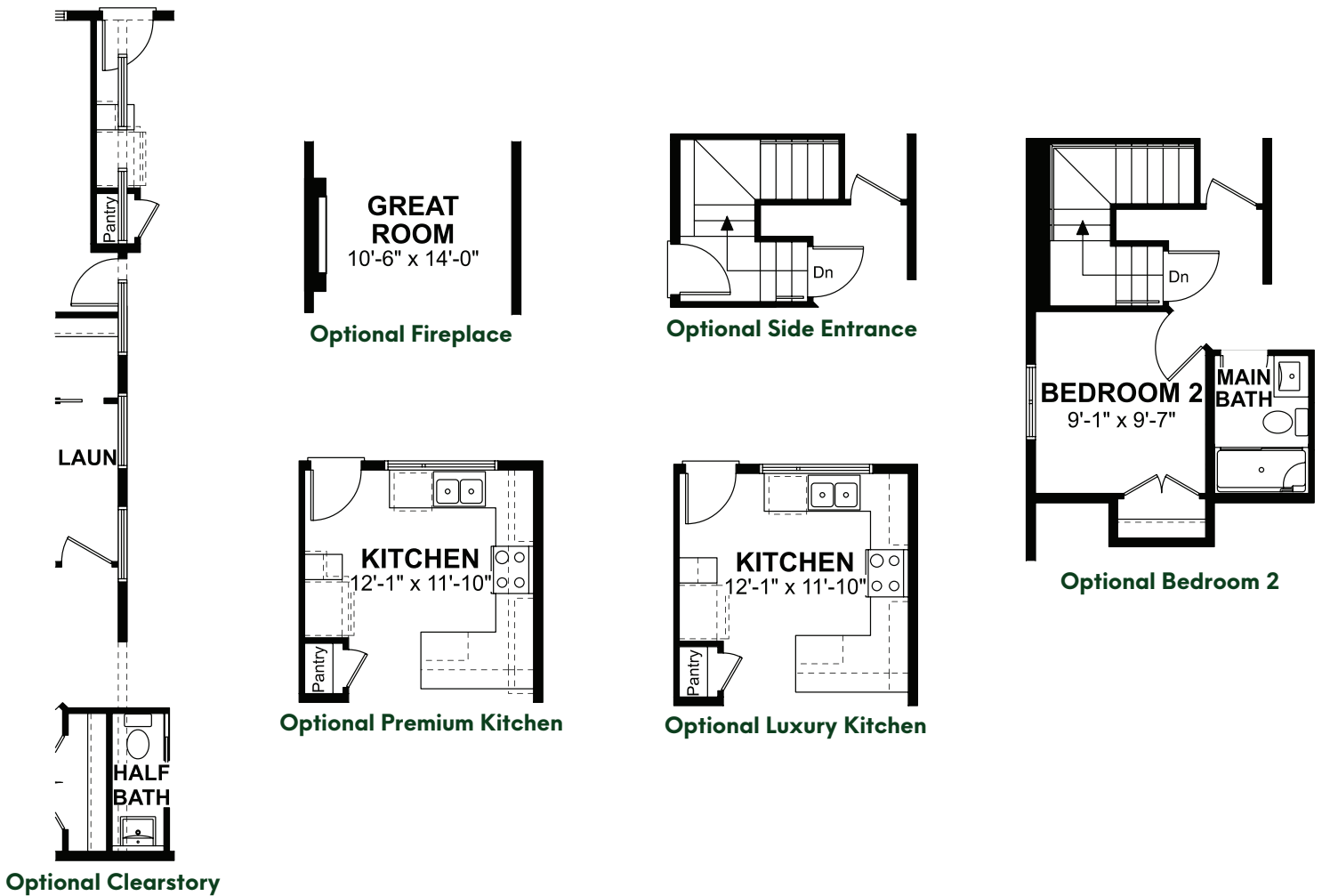


Ashby

1,080 Sq. Ft. | 1 Bedrooms | 1.5 Bathrooms

Elevations, renderings and dimensions shown above are a guideline only and are intended to convey the concept and vision for the home. Architectural requirements or restrictions may differ per subdivision or as work progresses. All images and dimensions are not intended to form part any contract or warranty.
© Copyright 03|2026

Main Level Options:

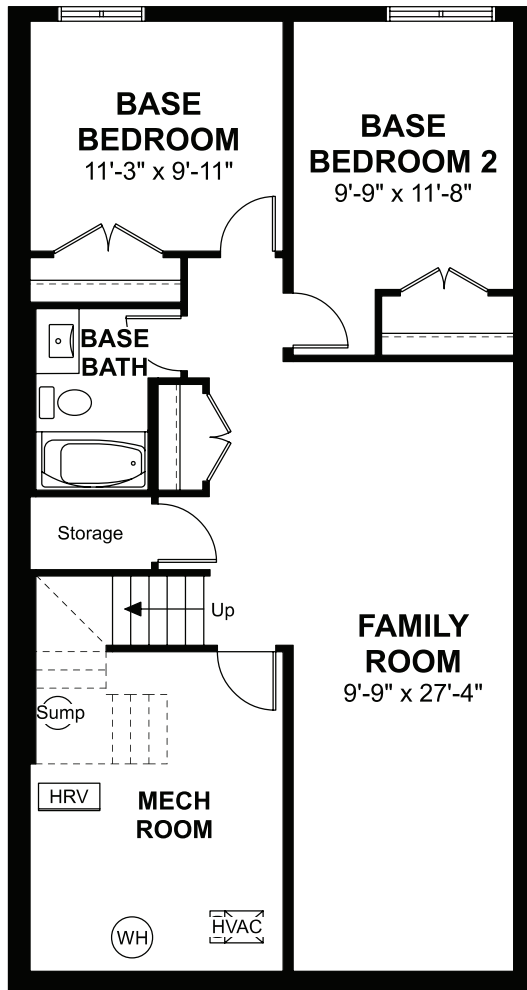


Ashby

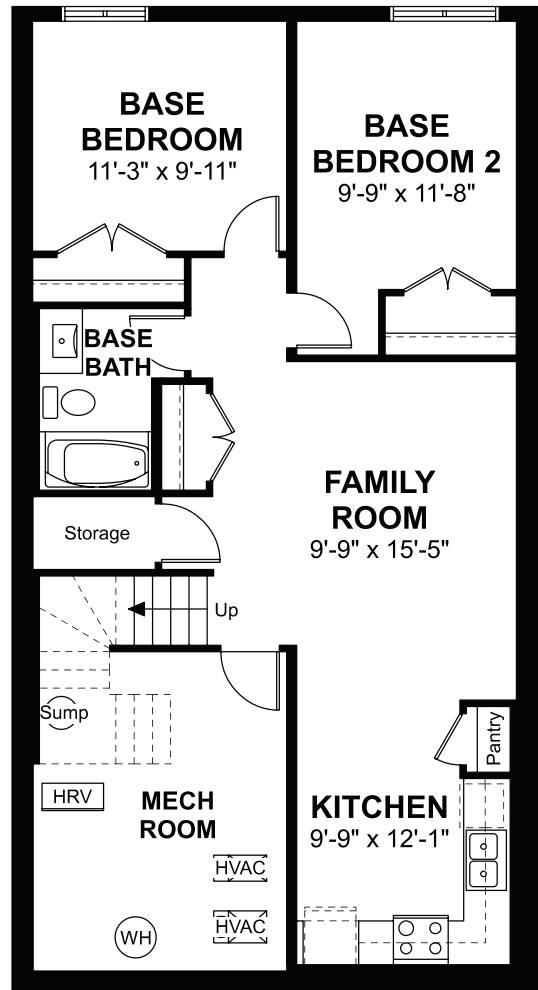
1,080 Sq. Ft. | 1 Bedrooms | 1.5 Bathrooms

Elevations, renderings and dimensions shown above are a guideline only and are intended to convey the concept and vision for the home. Architectural requirements or restrictions may differ per subdivision or as work progresses. All images and dimensions are not intended to form part any contract or warranty.
© Copyright 03|2026

Lower Level Options:



**Optional Finished
Lower Level**



**Optional Lower Level
Legal Suite**